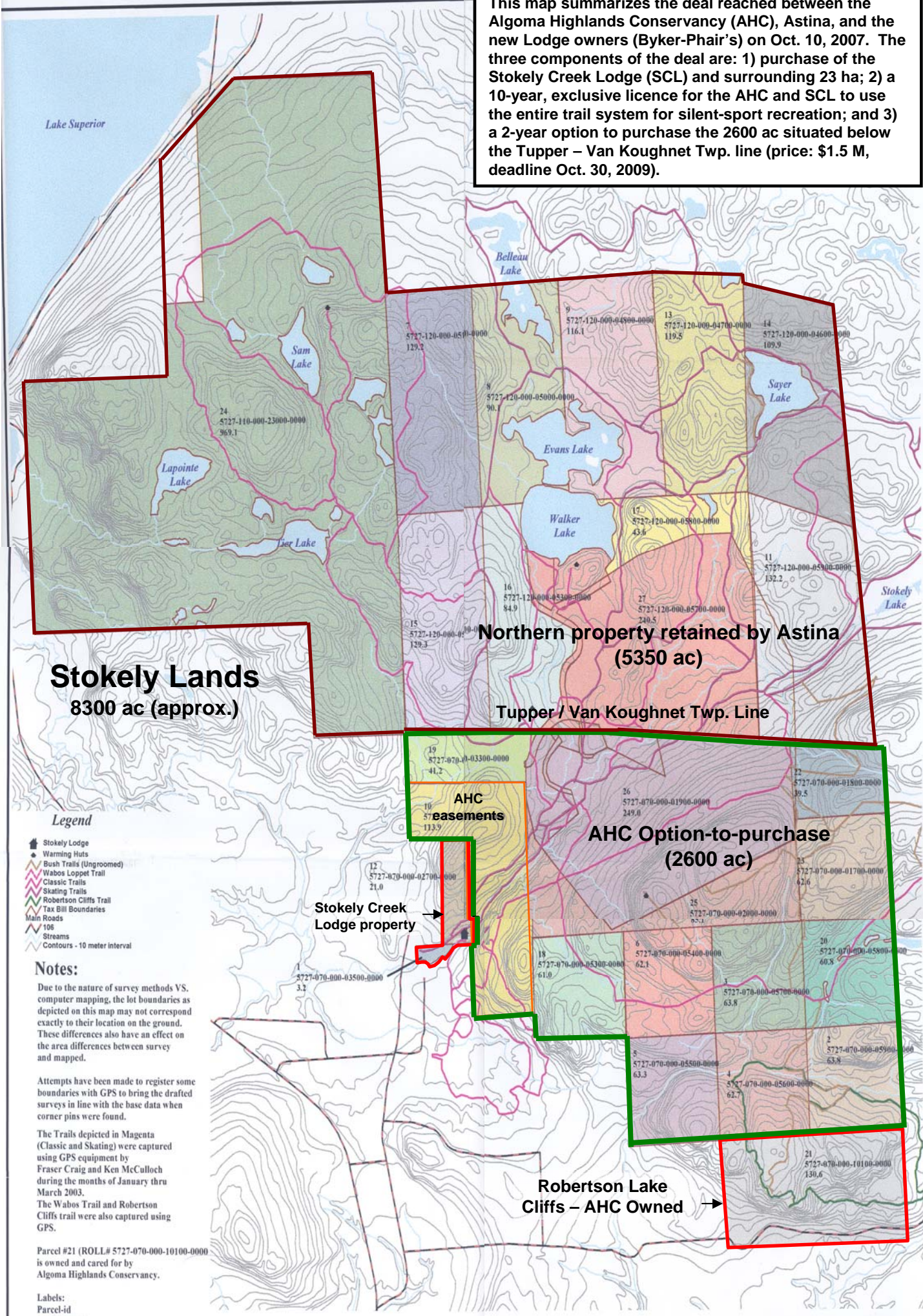


This map summarizes the deal reached between the Algoma Highlands Conservancy (AHC), Astina, and the new Lodge owners (Byker-Phair's) on Oct. 10, 2007. The three components of the deal are: 1) purchase of the Stokely Creek Lodge (SCL) and surrounding 23 ha; 2) a 10-year, exclusive licence for the AHC and SCL to use the entire trail system for silent-sport recreation; and 3) a 2-year option to purchase the 2600 ac situated below the Tupper – Van Koughnet Twp. line (price: \$1.5 M, deadline Oct. 30, 2009).



**Stokely Lands**  
8300 ac (approx.)

**Northern property retained by Astina**  
(5350 ac)

Tupper / Van Koughnet Twp. Line

**AHC easements**

**AHC Option-to-purchase**  
(2600 ac)

Stokely Creek Lodge property

Robertson Lake Cliffs – AHC Owned

**Legend**

- Stokely Lodge
- Warming Huts
- Bush Trails (Ungroomed)
- Wabos Loppet Trail
- Classic Trails
- Skating Trails
- Robertson Cliffs Trail
- Tax Bill Boundaries
- Main Roads
- 106
- Streams
- Contours - 10 meter interval

**Notes:**

Due to the nature of survey methods VS. computer mapping, the lot boundaries as depicted on this map may not correspond exactly to their location on the ground. These differences also have an effect on the area differences between survey and mapped.

Attempts have been made to register some boundaries with GPS to bring the drafted surveys in line with the base data when corner pins were found.

The Trails depicted in Magenta (Classic and Skating) were captured using GPS equipment by Fraser Craig and Ken McCulloch during the months of January thru March 2003.

The Wabos Trail and Robertson Cliffs trail were also captured using GPS.

Parcel #21 (ROLL# 5727-070-000-10100-0000) is owned and cared for by Algoma Highlands Conservancy.

Labels:  
Parcel-id  
Roll Number  
Hectares excluding water

